

USM

living essentials

International



living essentials

Like life itself, our living spaces are in a constant state of change. Trends and individual preferences evolve regularly. Things come and go, whether it is as a result of technological innovations, growing collections or a pending move. But one thing is always true: Our living spaces reflect the way we think and feel. This is where we spend our time, relax, and enjoy life.

Furnishings that can move and grow with us, and take on new roles, are a prerequisite. Because of its modularity, USM furniture systems can be adjusted to our changing preferences, are constantly being reinvented, and thus become an expression of our impressions of life – desirable objects, that stay with us for a lifetime.

Our “living essentials” brochure provides some insight into the world of USM and shows a selection of select designs for the home.

More information is available at www.usm.com



USM

- 3 Living room
- 11 TV / Hi-Fi
- 14 Library
- 16 Dining room
- 18 Bedroom
- 20 Kids
- 22 Home Office
- 24 Measurements
- 25 Colors / Table surfaces

living essentials

Living room

1 Sideboard

W/D/H: 1500/500/740 mm
with four A6 drawers
and two extension doors

2 Shelving

W/D/H: 2250/350/1090 mm
with three drop-down doors

3 Sideboard

W/D/H: 1500/350/890 mm
with four drop-down doors

4 Sideboard

W/D/H: 3750/500/890 mm
with ten drop-down doors

5 Shelving

W/D/H: 750/350/940 mm
with one drop-down door
and one extension door

See page 25 for the standard finish.
Sizes refer to the axle dimensions.

1



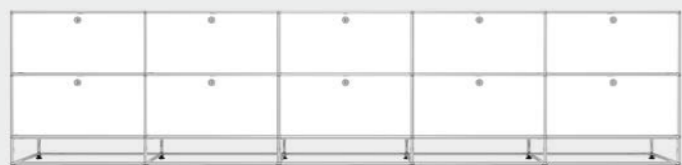
2



3

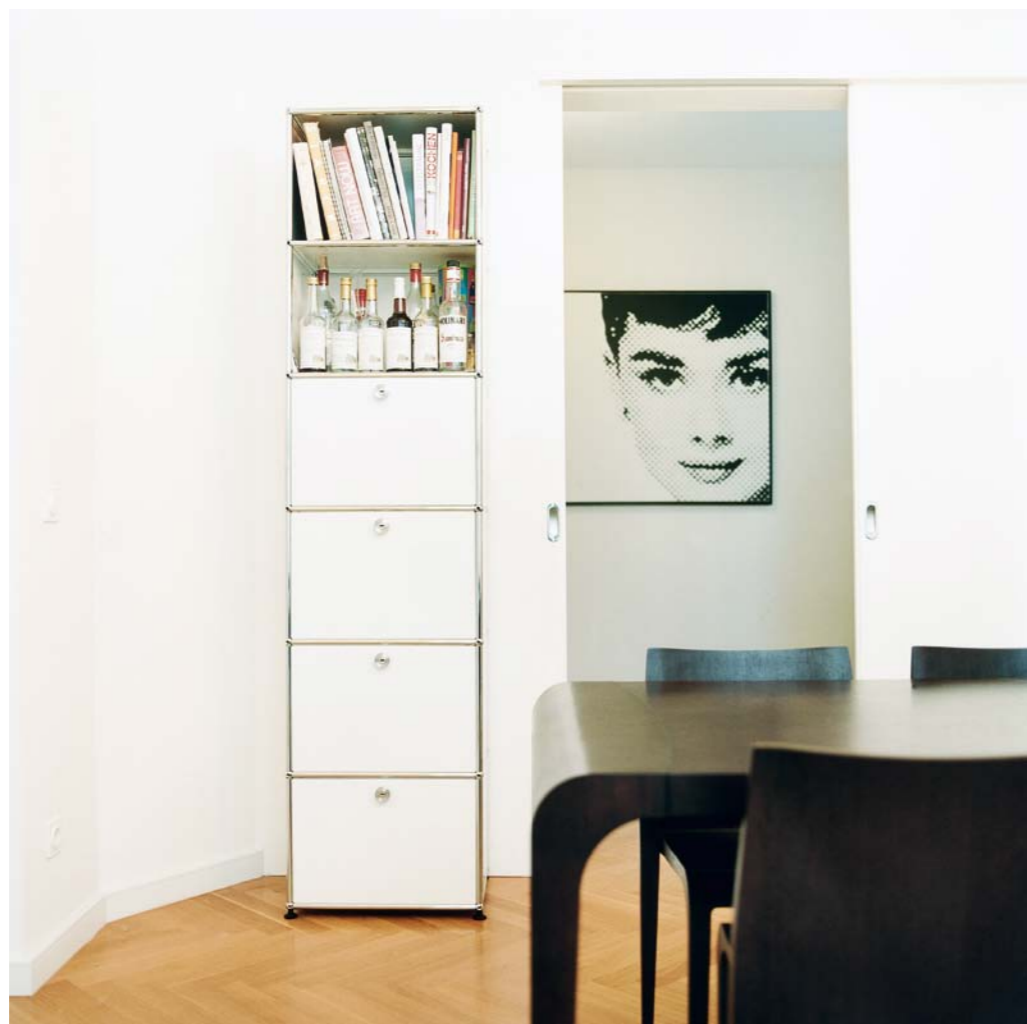


4



5





Living room

6 Shelving
W/D/H: 500/350/2140 mm
with three drop-down doors
and one extension door

7 Shelving
W/D/H: 500/350/1790 mm

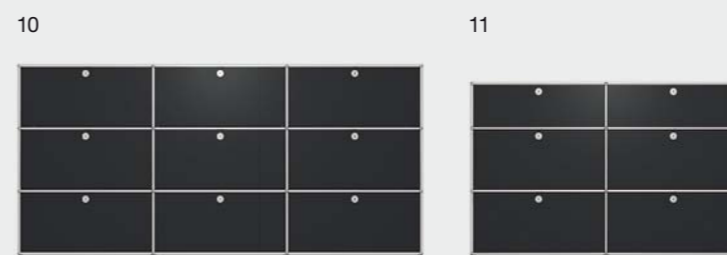
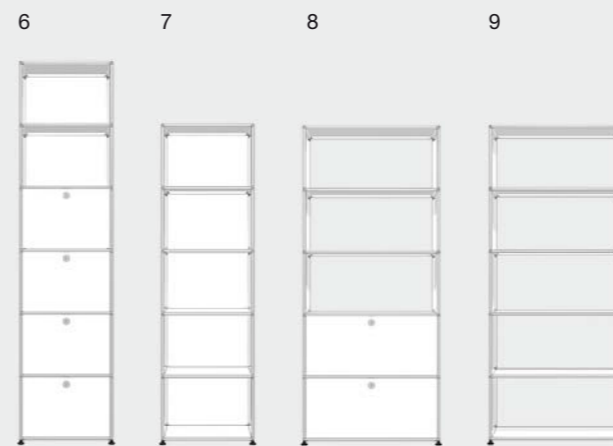
8 Shelving
W/D/H: 750/350/1790 mm
with one drop-down door
and one extension door

9 Shelving
W/D/H: 750/350/1790 mm

10 Sideboard
W/D/H: 2250/350/1090 mm
with nine drop-down doors

11 Sideboard
W/D/H: 1500/350/990 mm
with two drop-down doors,
two extension doors
and two drawers

See page 25 for the standard finish.
Sizes refer to the axle dimensions.



Living room

- 15 **Sideboard**
W/D/H: 3000/500/815 mm
with eight shallow drawers
and eight A6 drawers
- 16 **Shelving**
W/D/H: 750/350/990 mm
with one drop-down door,
one extension door
and one drawer
- 17 **Sideboard**
W/D/H: 3000/350/740 mm
with one drop-down door
- 18 **Sideboard**
W/D/H: 1500/350/1090 mm
with four drop-down doors
- 19 **Sideboard**
W/D/H: 1500/350/740 mm
with two drop-down doors
- 20 **Sideboard**
W/D/H: 1500/500/640 mm
with four A5 drawers
and two extension doors

See page 25 for the standard finish.
Sizes refer to the axle dimensions.

12



13



14





Living room

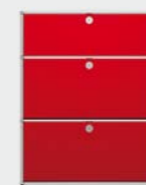
- 15 **Sideboard**
W/D/H: 3000/500/815 mm
with eight shallow drawers
and eight A6 drawers
- 16 **Shelving**
W/D/H: 750/350/990 mm
with one drop-down door,
one extension door
and one drawer
- 17 **Sideboard**
W/D/H: 3000/350/740 mm
with one drop-down door
- 18 **Sideboard**
W/D/H: 1500/350/1090 mm
with four drop-down doors
- 19 **Sideboard**
W/D/H: 1500/350/740 mm
with two drop-down doors
- 20 **Sideboard**
W/D/H: 1500/500/640 mm
with four A5 drawers
and two extension doors

See page 25 for the standard finish.
Sizes refer to the axle dimensions.

15



16



17



18



19



20



Living room

- 21 **Shelving**
W/D/H: 1750/350/1090 mm
with nine drop-down doors

- 22 **Shelving**
W/D/H: 1500/500/1440 mm
with four drop-down doors

- 23 **Shelving**
W/D/H: 2250/350/1790 mm
with three glass doors

- 24 **Shelving**
W/D/H: 2250/500/1790 mm
with nine drop-down doors,
three extension doors and
and three flip-up doors

See page 25 for the standard finish.
Sizes refer to the axle dimensions.

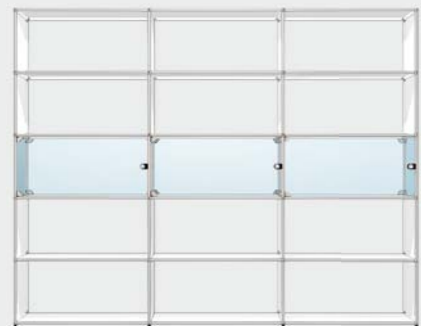
21



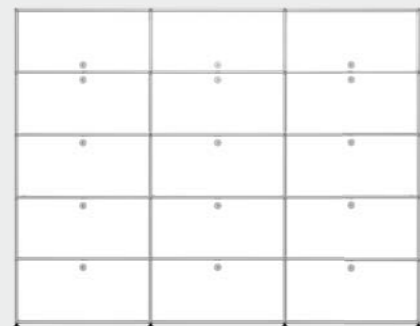
22



23



24





Living room

- 25 **Glass showcase**
W/D/H: 1500/350/740 mm
with four glass doors
- 26 **Glass showcase**
W/D/H: 3000/350/390 mm
with four glass doors
- 27 **Glass showcase**
W/D/H: 1500/350/1440 mm
with eight glass doors
and three LED lamps
- 28 **Glass showcase**
W/D/H: 1000/350/1790 mm
with ten glass doors
- 29 **Glass showcase**
W/D/H: 500/350/1440 mm
with four glass doors

See page 25 for the standard finish.
Sizes refer to the axle dimensions.

25



26



27



28



29



Living room

30 Lowboard
W/D/H: 3000/350/390 mm

31 Lowboard
W/D/H: 3000/350/390 mm
with one extension door

32 Lowboard
W/D/H: 2000/350/390 mm
with one drop-down door

33 Lowboard
W/D/H: 2250/350/390 mm
with three glass divider shelves

See page 25 for the standard finish.
Sizes refer to the axle dimensions.

30



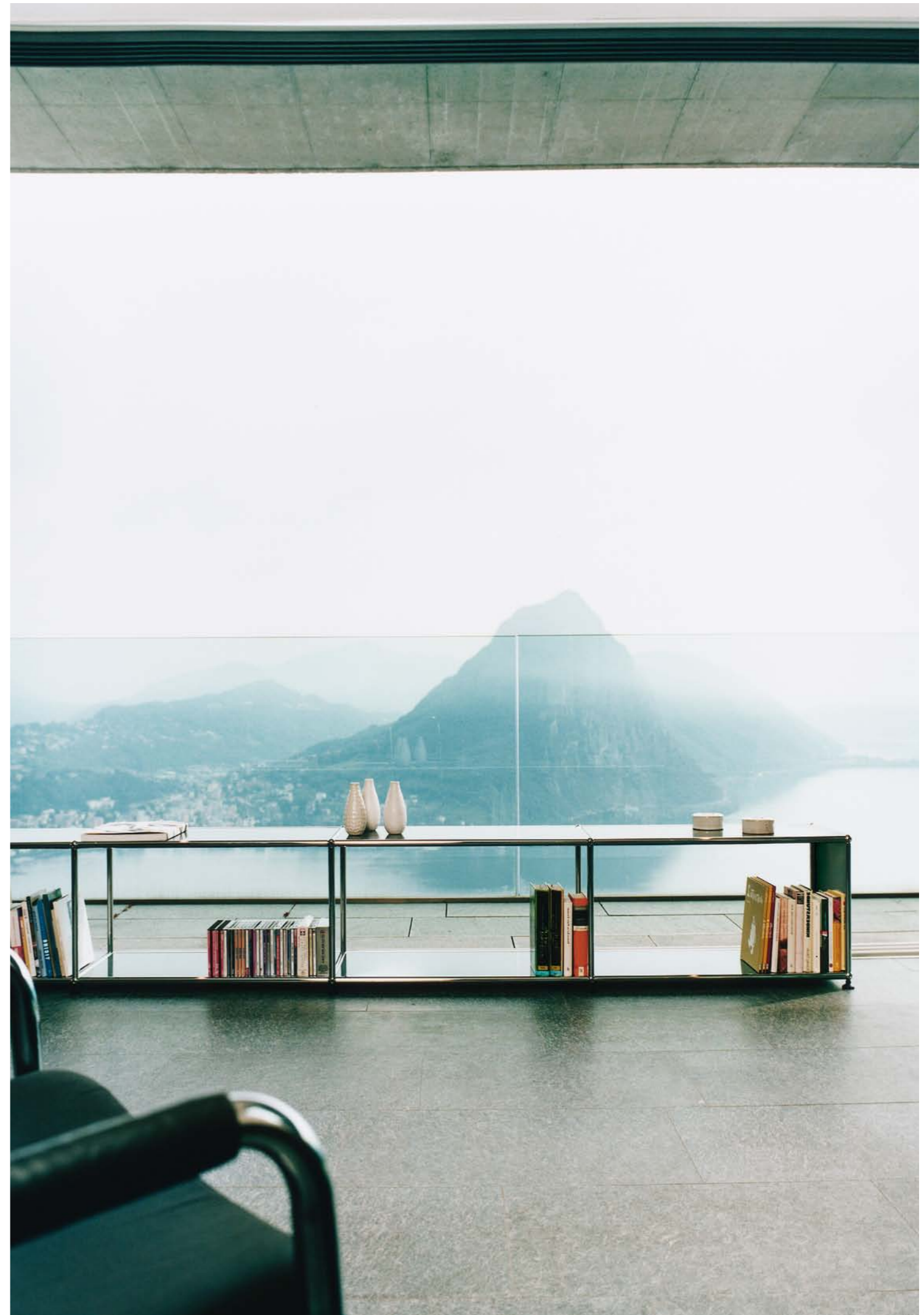
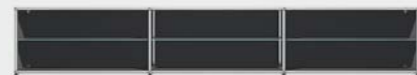
31



32



33





Living room

- 34 **Shelving**
W/D/H: 750/350/990 mm
with two extension doors
and one drawer
- 35 **Shelving**
W/D/H: 500/350/990 mm
with three drop-down doors
- 36 **Shelving**
W/D/H: 750/350/990 mm
with one extension door
and one divider shelf
- 37 **Shelving**
W/D/H: 750/350/890 mm
with three extension doors
- 38 **Shelving**
W/D/H: 750/350/740 mm
with one drop-down door

See page 25 for the standard finish.
Sizes refer to the axle dimensions.

34



35



36



37



38



TV / Hi-Fi

39 **Credenza**
W/D/H: 1500/350/390 mm
with two glass divider shelves

40 **Credenza**
W/D/H: 750/350/430 mm
with casters

41 **Credenza**
W/D/H: 750/350/580 mm
with two drop-down doors
and casters

42 **Credenza**
W/D/H: 750/350/580 mm
with casters

43 **Credenza**
W/D/H: 750/500/430 mm
with one extension door, casters
and counterweight

44 **Credenza**
W/D/H: 750/350/430 mm
with casters

See page 25 for the standard finish.
Sizes refer to the axle dimensions.

39



40



41



42



43



44





TV / Hi-Fi

- 45 **USM Haller square occasional table**
L/D/H: 750/750/370 mm
Lacquered glass
- 46 **Serving cart**
W/D/H: 750/500/580 mm
Transparent glass
- 47 **Side table**
W/D/H: 500/500/390 mm
with one divider shelf
- 48 **Side table**
W/D/H: 750/500/540 mm
- 49 **Credenza**
W/D/H: 2250/500/430 mm
with three extension doors,
one extension shelf, casters
and counterweight
- 50 **Credenza**
W/D/H: 2250/350/390 mm
with one drop-down door

- a **USM Inos CD tray**
Available in graphite black or
light gray, freestanding or
inserted on an extension shelf
or in drawers

Inserts for 23 CDs
D: 500 mm

Inserts for 14 CDs
D: 350 mm
- b **USM Inos DVD tray**
Available in graphite black or
light gray, freestanding or
inserted on an extension shelf

Inserts for 16 DVDs
D: 500 mm

Inserts for 9 DVDs
D: 350 mm

See page 25 for the standard finish.
Sizes refer to the axle dimensions.

a



b



45



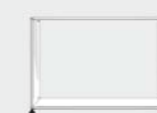
46



47



48



49



50



TV / Hi-Fi

51 Lowboard

W/D/H: 3000/500/430 mm
with five extension shelves,
two open filing baskets
and casters

52 Sideboard

W/D/H: 2250/350/740 mm
with three drop-down doors
and three glass doors

53 Sideboard

W/D/H: 1500/500/640 mm
with two drop-down doors
and two divider shelves

54 Sideboard

W/D/H: 2250/350/740 mm
with three extension doors
and three drawers

55 Credenza

W/D/H: 2000/500/740 mm
with two drop-down doors
and four A6 drawers

See page 25 for the standard finish.
Sizes refer to the axle dimensions.

51



52



53



54



55





Library

56 Shelving
W/D/H: 2250/350/2140 mm
with three drop-down doors
and three extension shelves

57 Shelving
W/D/H: 2250/350/1740 mm
with three drop-down doors

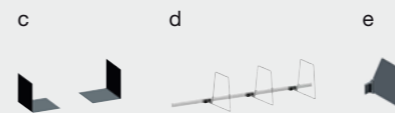
58 Shelving
W/D/H: 3000/350/1790 mm
with three drop-down doors

59 USM Kitos round table
Ø 900, H 450 mm
Natural walnut

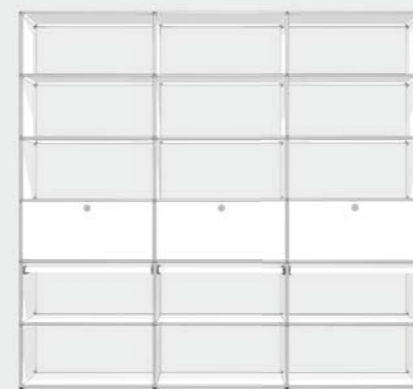
USM book-ends

- c Metal magnetic book-ends in graphite black or light gray
- d Metal rail with adjustable book-end frames
- e Sliding book-end to be used with the bookshelf panel, in graphite black or light gray (see example # 64)

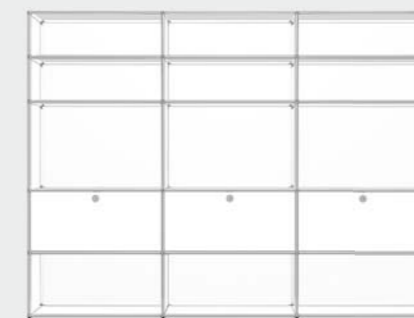
See page 25 for the standard finish.
Sizes refer to the axle dimensions.



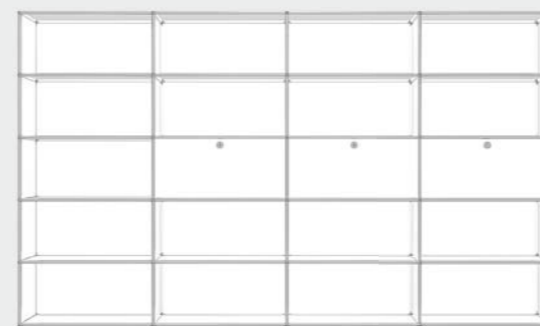
56



57



58



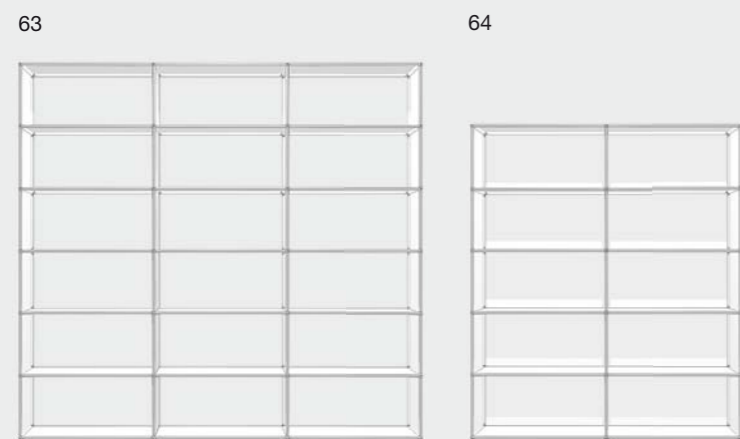
59



Library

- 60 **Shelving**
W/D/H: 1000/350/1790 mm
- 61 **Glass showcase**
W/D/H: 2000/500/1540 mm
with two glass doors
- 62 **Glass showcase**
W/D/H: 1000/350/1090 mm
with two drop-down doors
and four glass doors
- 63 **Shelving**
W/D/H: 2250/350/2140 mm
- 64 **Shelving**
W/D/H: 1500/350/1790 mm
with ten bookshelf panels

See page 25 for the standard finish.
Sizes refer to the axle dimensions.



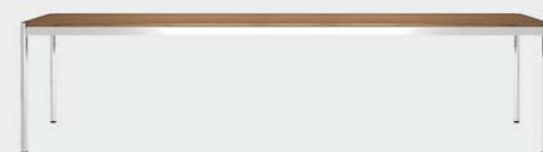


Dining room

- 65 **USM Haller rectangular table**
L/D/H: 3000/1000/740 mm
Natural walnut
- 66 **USM Haller square table**
L/D/H: 1000/1000/740 mm
Natural walnut
- 67 **Sideboard**
W/D/H: 1500/350/740 mm
- 68 **Sideboard**
W/D/H: 1500/350/740 mm
- 69 **Sideboard**
W/D/H: 1500/350/1090 mm
with two drop-down doors
- 70 **Sideboard**
W/D/H: 1500/350/740 mm
with one drop-down door
and one extension door
- 71 **Sideboard**
W/D/H: 1500/350/740 mm
with one drop-down door

See page 25 for the standard finish.
Sizes refer to the axle dimensions.

65



66



67



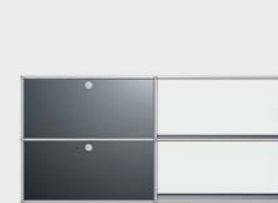
68



69



70



71



Dining room

72 USM Haller rectangular table

L/D/H: 2000/1000/740 mm
Transparent glass

73 Sideboard

W/D/H: 1500/350/740 mm
with two drop-down doors
and two extension doors

74 Side table

W/D/H: 750/350/640 mm
with one extension door

75 Sideboard

W/D/H: 1500/350/740 mm
with three drop-down doors

76 Sideboard

W/D/H: 1500/350/740 mm
with two glass doors

77 Sideboard

W/D/H: 1500/350/640 mm
with two extension doors

See page 25 for the standard finish.
Sizes refer to the axle dimensions.

72



73



74



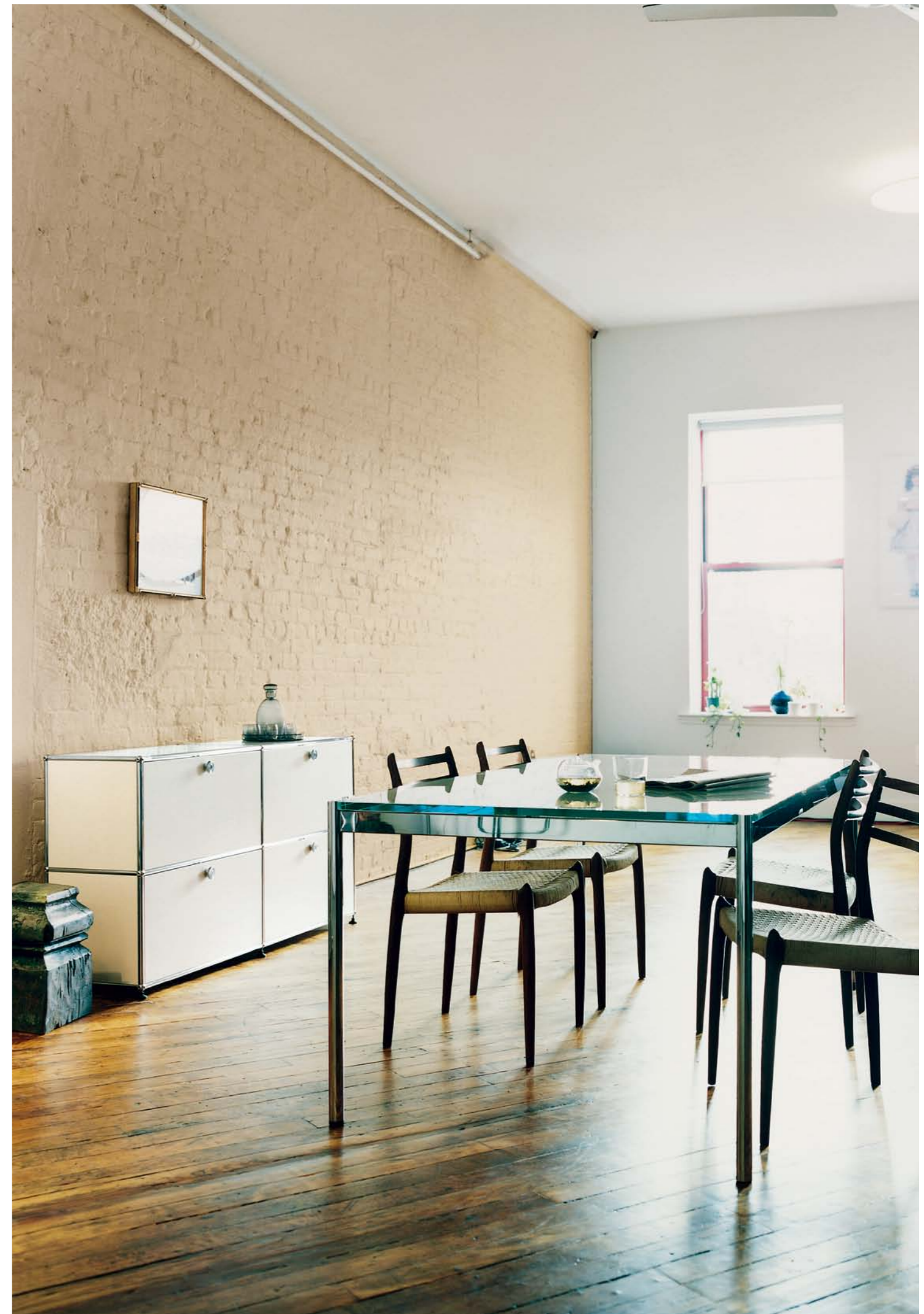
75



76



77





Bedroom

- 78 **Sideboard**
W/D/H: 1185/500/565 mm
with three drop-down doors
and three A6 drawers
- 79 **Shelving**
W/D/H: 750/350/1090 mm
with one drop-down door
and one extension door
- 80 **Sideboard**
W/D/H: 1500/350/740 mm
with two drop-down doors
- 81 **Sideboard**
W/D/H: 1000/350/565 mm
with four drawers
- 82 **Sideboard**
W/D/H: 2250/350/740 mm
with three extension doors
- 83 **Sideboard**
W/D/H: 2000/350/740 mm
with three drop-down doors
- 84 **Sideboard**
W/D/H: 3750/350/740 mm
with five drop-down doors

See page 25 for the standard finish.
Sizes refer to the axle dimensions.

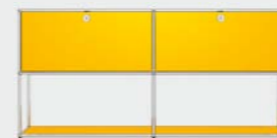
78



79



80



81



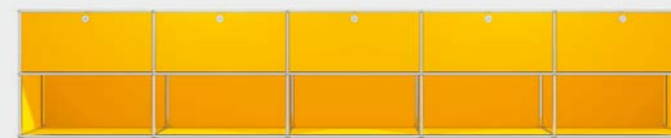
82



83



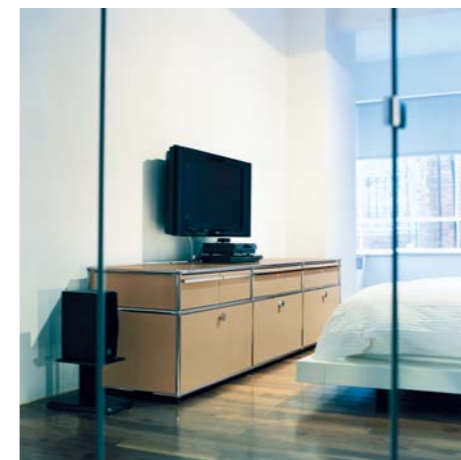
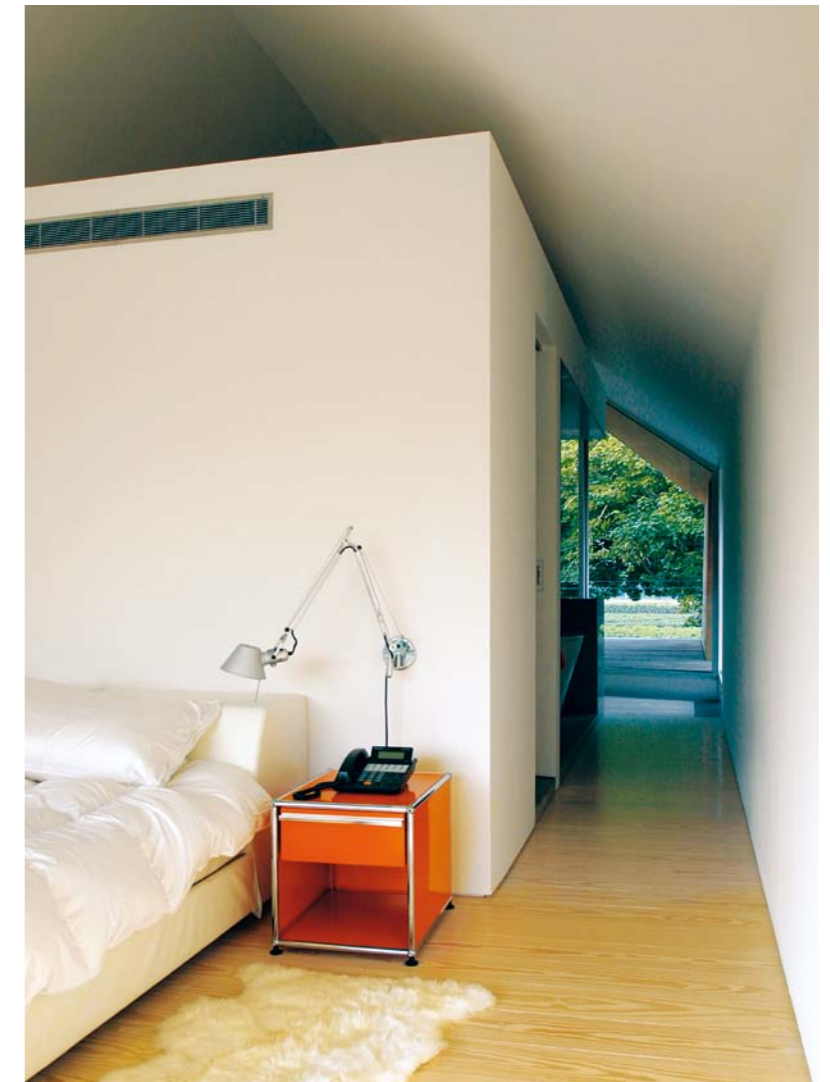
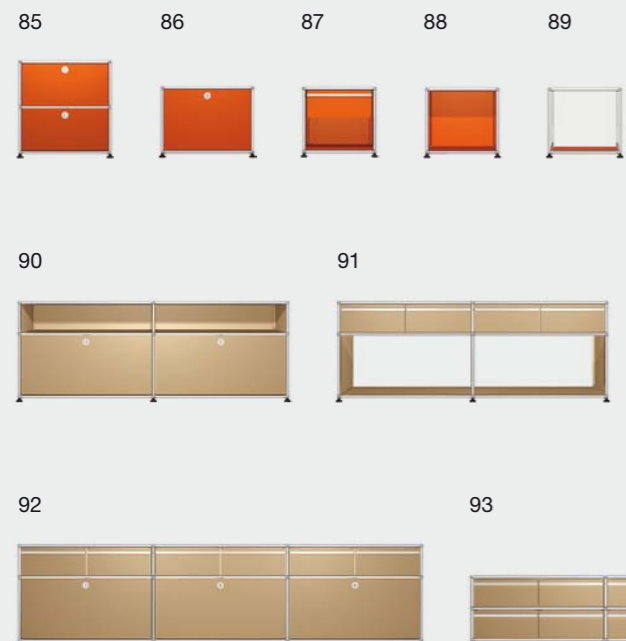
84



Bedroom

- 85 **Side table**
W/D/H: 500/350/540 mm
with two drop-down doors
- 86 **Side table**
W/D/H: 500/500/390 mm
with one drop-down door
- 87 **Side table**
W/D/H: 395/500/390 mm
with one A6 drawer
- 88 **Side table**
W/D/H: 395/350/390 mm
- 89 **Side table**
W/D/H: 395/350/390 mm
- 90 **Sideboard**
W/D/H: 1500/500/565 mm
with two drop-down doors
- 91 **Sideboard**
W/D/H: 1500/500/565 mm
with four A6 drawers
- 92 **Sideboard**
W/D/H: 2250/500/565 mm
with three extension doors
and six A6 drawers
- 93 **Lowboard**
W/D/H: 2250/500/390 mm
with twelve A6 drawers

See page 25 for the standard finish.
Sizes refer to the axle dimensions.





Kids

- 94 **Lowboard**
W/D/H: 2000/350/390 mm
with four drop-down doors
- 95 **Lowboard**
W/D/H: 1500/350/430 mm
with two drop-down doors
and casters
- 96 **Shelving**
W/D/H: 500/350/1090 mm
with one extension door
and two divider shelves
- 97 **Toy Box**
W/D/H: 500/500/430 mm
with casters
- 98 **Sideboard**
W/D/H: 1500/500/990 mm
with six extension doors
- 99 **Sideboard**
W/D/H: 3000/350/780 mm
with four drop-down doors,
four extension shelves
and casters

See page 25 for the standard finish.
Sizes refer to the axle dimensions.

94



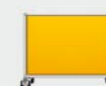
95



96



97



98



99



Kids

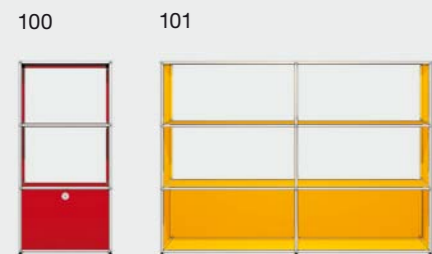
100 **Shelving**
W/D/H: 500/350/1090 mm
with one extension door

101 **Sideboard**
W/D/H: 1500/350/1090 mm

102 **Sideboard**
W/D/H: 1500/350/890 mm
with two drop-down doors

103 **Sideboard**
W/D/H: 1500/350/740 mm
with one drawer

See page 25 for the standard finish.
Sizes refer to the axle dimensions.





Home Office

104 **USM Kitos rectangular table**
L/D/H: 1800/900/700 – 1200 mm
Natural cherry

105 **Wheeled storage container**
W/D/H: 395/500/605 mm
with three A6 drawers

106 **USM Kitos round table**
Ø 900, H 740 mm
Transparent glass

107 **Wheeled storage container**
W/D/H: 750/500/605 mm
with one extension door,
two A6 drawers
and counterweight

108 **Shelving**
W/D/H: 1500/350/1790 mm
with four drop-down doors

109 **Shelving**
W/D/H: 1500/350/1790 mm
with one drop-down door

USM Inos box set C4
Available in graphite black
or light gray, freestanding
or inserted on a shelf

f 5 drawer box set open
or closed front

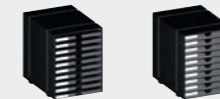
g 10 drawer box set open
or closed front

See page 25 for the standard finish.
Sizes refer to the axle dimensions.

f



g



104



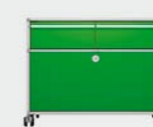
105



106



107



108



109



Home Office

110 USM Haller rectangular table

L/D/H: 1500/750/740 mm
Natural walnut

111 Wheeled storage container

W/D/H: 395/500/530 mm
with one drawer below
and two A6 drawers

112 Sideboard

W/D/H: 2250/350/740 mm
with three drop-down doors
and three extension doors

113 Sideboard

W/D/H: 2250/350/740 mm

114 Sideboard

W/D/H: 2250/350/740 mm
with three extension shelves
and six open filing baskets

See page 25 for the standard finish.
Sizes refer to the axle dimensions.

110



111



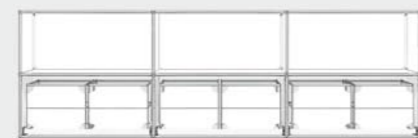
112



113

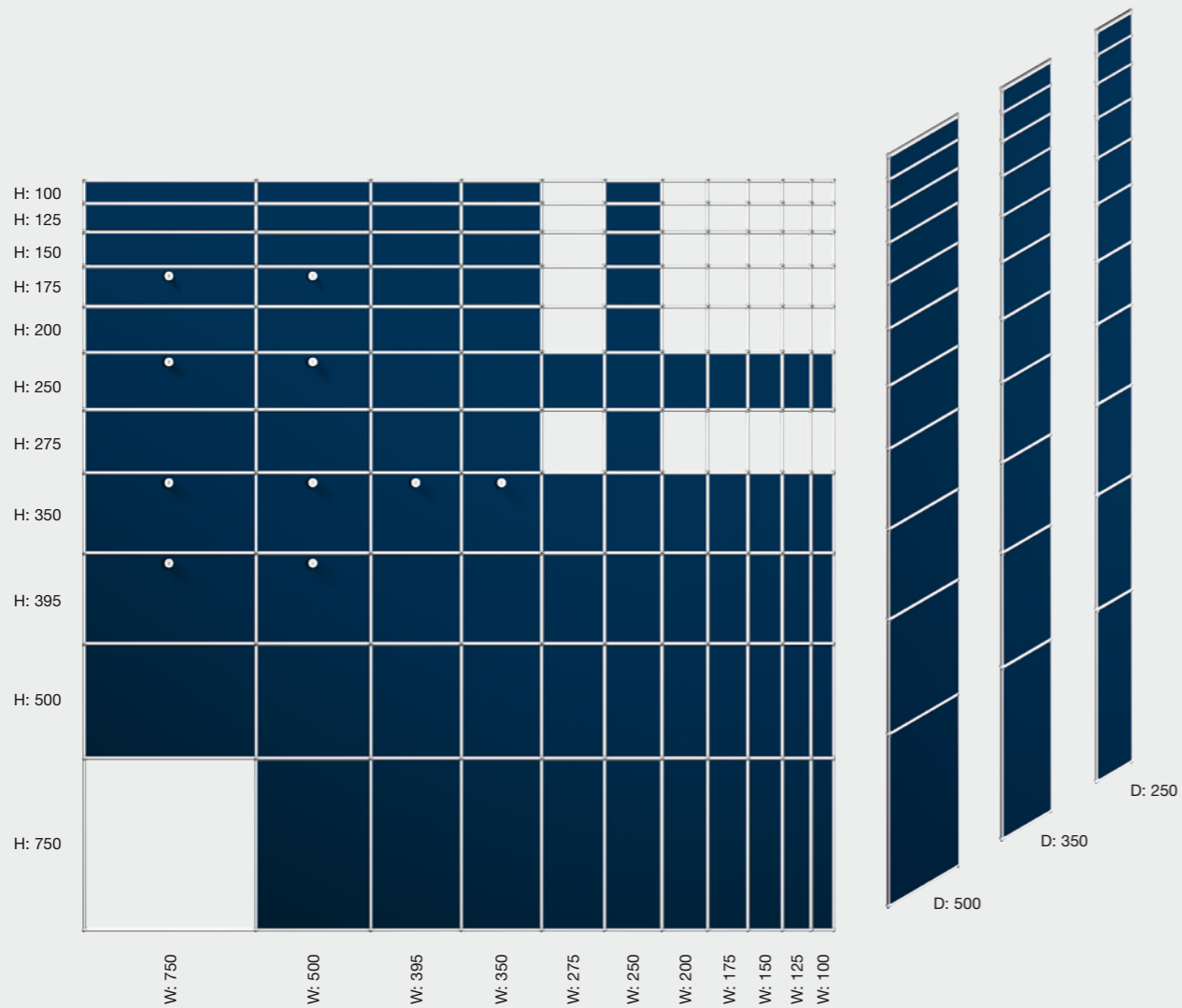


114



USM Haller
Measurements

The standard tube widths, depths and heights are shown. The standard panels are shaded and doors marked. All measurements in mm refer to the distance between axes.



USM Haller
Colors



USM Haller / USM Kitos
Table surfaces



* USM Inos accessories are available in graphite black and light gray.

Switzerland:
USM U. Schärer Söhne AG
Thunstrasse 55
CH-3110 Münsingen
Phone +41 31 720 72 72
Fax +41 31 720 73 40
info@ch.usm.com

Germany:
USM U. Schärer Söhne GmbH
Postfach 1653
D-77806 Bühl
Phone +49 72 23 80 94 0
Fax +49 72 23 80 94 199
info@de.usm.com

France:
USM U. Schärer Fils SA
Bureaux et showroom Paris
23, rue de Bourgogne
F-75007 Paris
Phone +33 1 53 59 30 30
Fax +33 1 53 59 30 39
info@fr.usm.com

USA:
USM U. Schaerer Sons Inc.
New York Showroom
28 – 30 Greene Street
New York, NY 10013
Phone +1 212 371 1230
Fax +1 212 371 1251
info@us.usm.com

Japan:
USM U. Schaerer Sons K.K.
Tokyo Showroom
Marunouchi MY PLAZA 1 · 2F
2-1-1 Marunouchi, Chiyoda-ku
Tokyo 100-0005
Phone +81 3 5220 2221
Fax +81 3 5220 2277
info@jp.usm.com

All other countries
contact USM Switzerland.

www.usm.com