

USM

working essentials

International



working essentials

The only constant is change. This is true in our personal lives – and even more so in our working environments. Work philosophies, furnishing trends and technical aids constantly test the ways in which we work.

That is why it is essential to be able to build on flexible systems and solid values. USM has stood for modularity coupled with value for more than 45 years. With the highest quality materials, Swiss manufacturing, modifiable functionalities and timeless design, USM Modular Furniture is much more than just an everyday work aid: it is a future-oriented asset.

The “working essentials” program offers inspiration in the form of real-life styles used within the world of USM Modular Furniture. The enclosed brochure showcases exemplary solutions for home and office.

More information is available at www.usm.com.



USM



essential solutions

3 **Individual workstation**

7 **Executive office**

10 **Shared workstation**

14 **Conference**

16 **Reception**

20 **Storage**

22 **Measurements**

24 **Accessories**

25 **Colors / Table surfaces**

essential solutions

The various configurations of USM Modular Furniture

Individual workstation

- 1.1 **Pedestal**
W/D/H: 395/500/605 mm
with three A6 drawers
- 1.2 **USM Haller Advanced rectangular table**
L/D/H: 1750/750/740 mm
black table linoleum
with sliding surface,
adaptation points and
grommet hatch
- 2.1 **Storage**
W/D/H: 750/350/740 mm
with one drop down door
- 2.2 **USM Haller Advanced rectangular table**
L/D/H: 1750/750/680–860 mm
black table linoleum
with manual height adjustment
with handle, sliding surface
and adaptation points

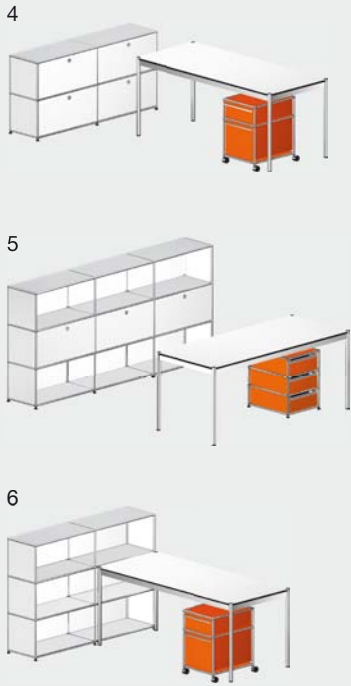
- 3.1 **Storage**
W/D/H: 750/350/740 mm
with two drawers
- 3.2 **USM Haller rectangular table**
L/D/H: 1750/750/740 mm
black table linoleum
with adaptation points
and a cable wire basket
- Sizes refer to the axle dimensions.





Individual workstation

- | | |
|--|--|
| <p>4.1 Sideboard
W/D/H: 1500/350/740 mm
with four drop down doors
with lock</p> <p>4.2 Pedestal
W/D/H: 395/500/605 mm
with one A6 drawer
and one A4 drawer</p> <p>4.3 USM Haller rectangular table
L/D/H: 1750/750/740 mm
pearl gray laminate</p> <p>5.1 Shelving
W/D/H: 2250/350/1090 mm
with three drop down doors
with lock</p> <p>5.2 Storage
W/D/H: 395/500/565 mm
with three A6 drawers</p> <p>5.3 USM Haller rectangular table
L/D/H: 1750/750/680–860 mm
pearl gray laminate
with manual height adjustment
with handle</p> | <p>6.1 Shelving
W/D/H: 1500/350/1090 mm</p> <p>6.2 Pedestal
W/D/H: 395/500/605
with one A6 drawer
and one A4 drawer</p> <p>6.3 USM Haller rectangular table
L/D/H: 1750/750/740 mm
pearl gray laminate</p> <p>Sizes refer to the axle dimensions.</p> |
|--|--|

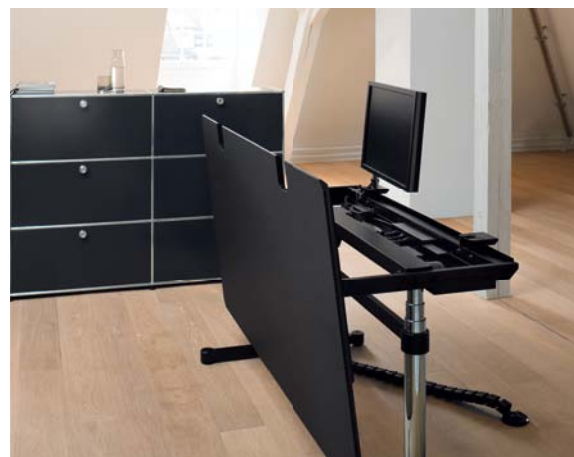


Individual workstation

- 7.1 **Shelving**
W/D/H: 2250/350/1790 mm
with three drawers
- 7.2 **Sideboard**
W/D/H: 1500/500/740 mm
with one drop down door
and one extension shelf
- 7.3 **USM Haller rectangular table**
L/D/H: 1750/750/740 mm
black table linoleum
- 8.1 **Shelving**
W/D/H: 2250/350/1790 mm
with three drop down doors
and three angled shelves
- 8.2 **Sideboard**
W/D/H: 1500/350/740 mm
with two extension doors
and one drop down door
- 8.3 **USM Haller rectangular table**
L/D/H: 1750/750/740 mm
black table linoleum
- 9.1 **Shelving**
W/D/H: 2250/500/1090 mm
with six drop down doors
and three extension doors
- 9.2 **Pedestal**
W/D/H: 750/500/605 mm
with one extension door
and one drawer
- 9.3 **USM Haller rectangular table**
L/D/H: 1750/750/740 mm
black table linoleum

Sizes refer to the axle dimensions.





Individual workstation

10.1 Shelving

W/D/H: 1500/350/1090 mm
with four drop down doors
and two extension doors

10.2 USM Kitos E Advanced rectangular table

L/D/H: 1800/900/650–1300 mm
black table linoleum
with electric height adjustment,
foldable sliding surface and
adaptation points

11.1 Shelving

W/D/H: 2250/350/1790 mm
with three drop down doors

11.2 USM Kitos E rectangular table

L/D/H: 1800/900/650–1300 mm
black table linoleum
with electric height adjustment
and grommet hatch

12.1 Shelving

W/D/H: 2250/500/915 mm
with three drawers,
three drop down doors
and six open extension
filing baskets

12.2 Storage

W/D/H: 750/350/640 mm
with one extension door

12.3 USM Kitos E Advanced rectangular table

L/D/H: 1800/900/650–1300 mm
black table linoleum
with electric height adjustment,
foldable sliding surface and
adaptation points

Sizes refer to the axle dimensions.

10



11



12



Executive office

13.1 Shelving

W/D/H: 1500/350/1790 mm
with four drop down doors

13.2 Pedestal

W/D/H: 395/500/605 mm
with three A6 drawers

13.3 USM Kitos rectangular table

L/D/H: 1800/900/700–1200 mm
natural cherry
with electric height adjustment

14.1 Shelving

W/D/H: 1500/350/1090 mm
with four drop down doors
and two extension doors

14.2 USM Kitos rectangular table

L/D/H: 1750/750/740 mm
natural cherry

14.3 USM Kitos round table

Ø 1100 mm, H: 740 mm
lacquered glass

15.1 Shelving

W/D/H: 500/350/1790 mm
with one extension door

**15.2 USM Kitos rectangular tables
(combination)**

L/D/H: 2505/1500/740 mm
natural cherry

USM Inos box set C4

Available in graphite black
or light gray, freestanding
or inserted on a shelf

a 5 drawer box set open
or closed front

b 10 drawer box set open
or closed front

Sizes refer to the axle dimensions.

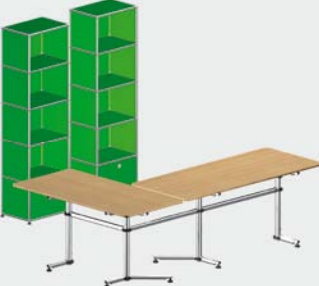
13



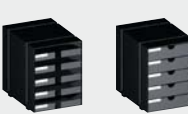
14



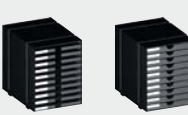
15



a



b





Executive office

- 16.1 **Shelving**
W/D/H: 1500/350/1440 mm
with six drop down doors
and two extension doors

16.2 **Pedestal**
W/D/H: 395/500/605 mm
with three A6 drawers
with lock

16.3 **USM Kitos rectangular table**
L/D/H: 1800/900/700–1200 mm
natural walnut
with electric height adjustment

16.4 **USM Kitos round table**
Ø 900 mm, H: 740 mm
lacquered glass

17.1 **Shelving**
W/D/H: 1895/350/1790 mm
with three drop down doors
and three extension doors

17.2 **Pedestal**
W/D/H: 750/500/680 mm
with two small drawers,
one extension shelf and
one extension door with lock

17.3 **USM Kitos rectangular table**
L/D/H: 1750/750/740 mm
natural walnut

17.4 **USM Kitos square table**
L/D/H: 750/750/680–1090 mm
natural walnut
with manual height adjustment

18.1 **Shelving**
W/D/H: 3000/350/915 mm
with four drawers,
four drop down doors
and four extension doors

18.2 **Pedestal**
W/D/H: 395/500/605 mm
with one A4 drawer

18.3 **USM Kitos rectangular table**
L/D/H: 1750/750/740 mm
natural walnut

18.4 **USM Kitos round table**
Ø 900 mm, H: 680–1090 mm
natural walnut
with manual height adjustment

Sizes refer to the axle dimensions.



Executive office

- 19.1 **Sideboard**

W/D/H: 3000/350/740 mm
with four drop down doors
and four extension doors
- 19.2 **Pedestal**

W/D/H: 395/500/605 mm
with one A4 drawer
and one A6 drawer
- 19.3 **USM Haller rectangular table**

L/D/H: 1750/750/740 mm
lacquered glass
- 20.1 **Shelving**

W/D/H: 2000/350/1440 mm
with eight drop down doors
- 20.2 **Pedestal**

W/D/H: 395/500/605 mm
with three A6 drawers
- 20.3 **USM Haller rectangular table**

L/D/H: 1750/750/680–860 mm
pearl gray laminate
with manual height adjustment
with handle
- 21.1 **Shelving**

W/D/H: 1500/350/1790 mm
- 21.2 **Pedestal**

W/D/H: 395/500/530 mm
with one small drawer
and two A6 drawers
- 21.3 **USM Haller rectangular table**

L/D/H: 1750/750/740 mm
pearl gray laminate
with adaptation points
and a cable wire basket
- Sizes refer to the axle dimensions.





Shared workstation

22.1 Sideboard
W/D/H: 1500/350/740 mm
with two drop down doors
and two extension doors

22.2 Sideboard
W/D/H: 1500/500/740 mm
with four A6 drawers,
two extension shelves
with angled files
and two extension doors

**22.3 USM Haller Advanced
rectangular table**
L/D/H: 1750/750/740 mm
pearl gray laminate
with sliding surface
and adaptation points

23.1 Shelving
W/D/H: 1500/350/1090 mm
with two drop down doors
and two extension doors

**23.2 USM Haller Advanced
rectangular table**
L/D/H: 1750/750/740 mm
pearl gray laminate
with sliding surface
and adaptation points

24.1 Sideboard
W/D/H: 1500/350/740 mm
with two drawers,
two extension shelves
with angled files
and two extension doors

**24.2 USM Haller Advanced
rectangular table**
L/D/H: 1750/750/740 mm
pearl gray laminate
with sliding surface
and adaptation points

Sizes refer to the axle dimensions.



Shared workstation

- 25.1

Shelving
W/D/H: 1500/350/1090 mm
with four drop down doors
and two extension doors
- 25.2

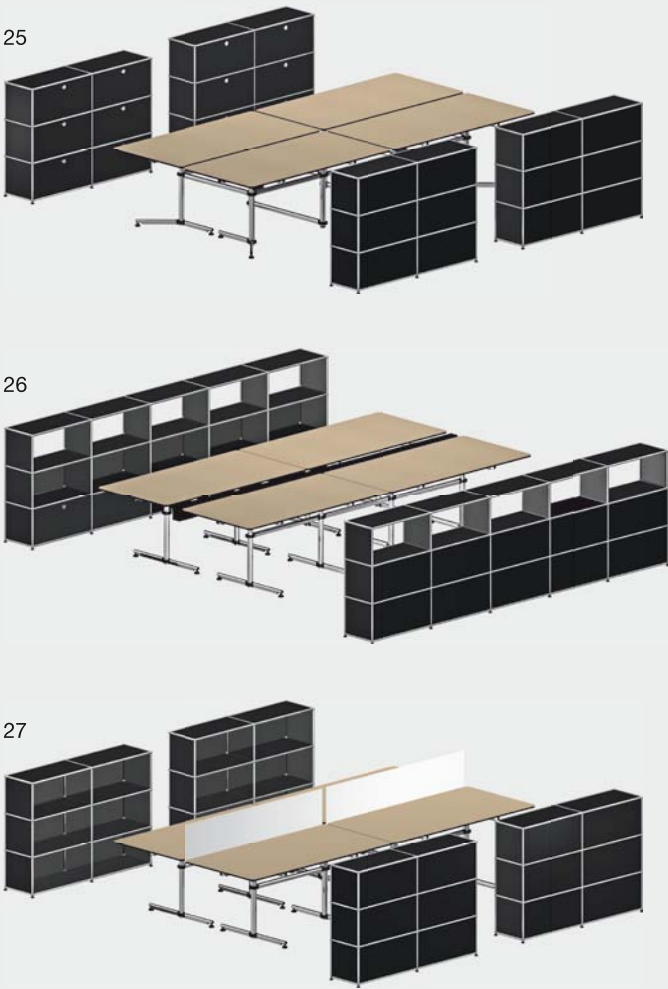
**USM Kitos rectangular tables
(combination)**
L/D/H: 3630/1830/700–1200 mm
beige table linoleum
each table with individual
electric height adjustment
- 26.1

Shelving
W/D/H: 3750/350/1090 mm
with five extension doors
- 26.2

**USM Kitos rectangular tables
(combination)**
L/D/H: 3630/2005/740 mm
beige table linoleum
with cable ducts
- 27.1

Shelving
W/D/H: 1500/350/1090 mm
- 27.2

**USM Kitos rectangular tables
(combination)**
L/D/H: 3630/1850/740 mm
beige table linoleum
with privacy panels
- Sizes refer to the axle dimensions.





Shared workstation

28.1 **Shelving**
W/D/H: 4500/350/1090 mm
with six drop down doors
and three extension doors

28.2 **USM Haller rectangular tables (combination)**
L/D/H: 4500/1500+125/740 mm
pearl gray laminate
with cable ducts

29.1 **Pedestal**
W/D/H: 395/500/530 mm
with one small drawer
and two A6 drawers

29.2 **USM Haller rectangular tables (combination)**
L/D/H: 4500/1500/740
pearl gray laminate
with three 1500 mm privacy panels
and four 750 mm privacy panels

30.1 **Shelving**
W/D/H: 1500/395/1090 mm
with two A4 drawers
and two A6 drawers

30.2 **USM Haller rectangular tables (combination)**
L/D/H: 3000/1500/740 mm
pearl gray laminate
with adaptation points
and a cable wire basket

Sizes refer to the axle dimensions.



Shared workstation

- 31.1 **Sideboard**

W/D/H: 2500/350/740 mm
- 31.2 **USM Haller rectangular tables (combination)**

L/D/H: 3000/1500+125/740 mm

pearl gray laminate

with cable ducts
- 32.1 **Sideboard**

W/D/H: 3000/350/740 mm

with four drop down doors,

two extension shelves, three

high Inos trays with inserts
- 32.2 **USM Haller rectangular tables (combination)**

L/D/H: 3000/1500/740 mm

pearl gray laminate

with adaptation points *

and a cable wire basket
- 33.1 **Pedestal**

W/D/H: 750/305/1130 mm

with one extension door,

two extension shelves, three

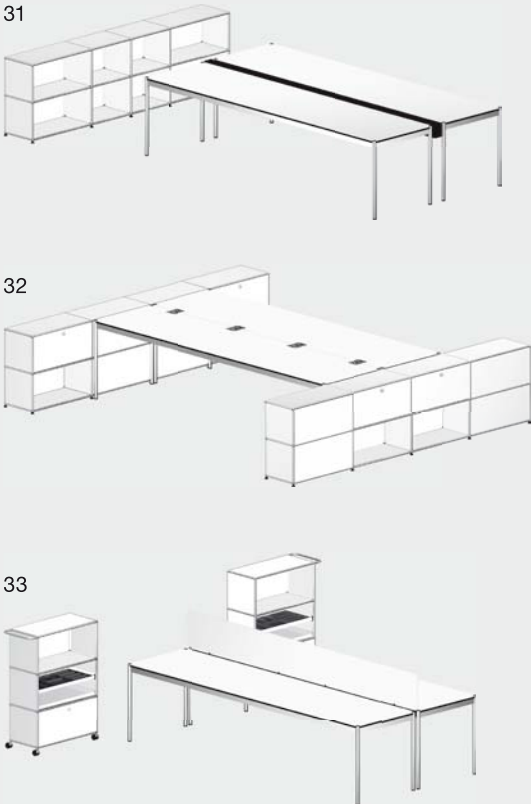
low Inos trays with inserts
- 33.2 **USM Haller rectangular tables (combination)**

L/D/H: 3000/1500/740 mm

pearl gray laminate

with privacy panels
- Sizes refer to the axle dimensions.

* Available as of August 2012





Conference

34.1 Shelving
W/D/H: 3750/350/865 mm
with five extension doors
and five drop down doors

**34.2 USM Haller rectangular tables
(combination)**
L/D/H: 5250/1500/740 mm
natural walnut
with six grommet hatches
and cable wire baskets

34.3 USM Display
W/D/H: 967/594/1920 mm
with two angled shelves
and one horizontal shelf
with rails on top

35.1 Sideboard
W/D/H: 3750/500/890 mm
with ten A6 drawers

**35.2 USM Haller tables
(combination)**
L/D/H: 3750/2250/740 mm
natural walnut

36.1 Shelving
W/D/H: 3000/350/1090 mm
with four extension doors
and four glass doors

36.2 USM Haller rectangular table
L/D/H: 3000/1000/740 mm
natural walnut

36.3 Serving cart
W/D/H: 750/500/580 mm
transparent glass

Sizes refer to the axle dimensions.



Conference

- 37.1

Sideboard
W/D/H: 3000/350/740 mm
with four drop down doors
- 37.2

USM Haller rectangular table
L/D/H: 2000/1000/740 mm
lacquered glass
- 37.3

USM Display
W/D/H: 967/594/1920 mm
with flipchart-rail, white board
panel and one horizontal shelf
with rails at the bottom
- 38.1

Sideboard
W/D/H: 2250/500/890 mm
with six drop down doors
- 38.2

USM Haller rectangular table
L/D/H: 1750/1000/740 mm
transparent glass
- 38.3

Serving cart
W/D/H: 500/750/580 mm
with one laquered glass panel
and one metal panel
- 39.1

Shelving
W/D/H: 750/350/1090 mm
with one extension door
and two drop down doors
- 39.2

USM Haller square table
L/D/H: 1000/1000/740 mm
pearl gray laminate
- Sizes refer to the axle dimensions.





Reception

- 40.1

Reception station
W/D/H: 3850/350/1090 mm
W/D/H: 2950/350/1090 mm
- 40.2

USM Haller rectangular tables (combination)
L/D/H: 3500/750/740 mm
pearl gray laminate
- 41.1

Reception station
W/D/H: 2850/350/740 mm
with two extension doors
and two drop down doors
W/D/H: 2100/350/1090 mm
- 41.2

USM Haller rectangular table
L/D/H: 1750/750/740 mm
pearl gray laminate
- 42.1

Reception station
W/D/H: 2100/350/1090 mm
W/D/H: 1100/350/1090 mm
- 42.2

USM Haller rectangular table
L/D/H: 1750/750/740 mm
pearl gray laminate
- 43

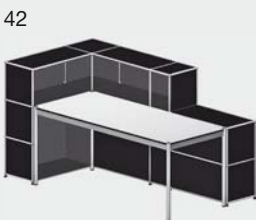
Side table
W/D/H: 500/500/540 mm
with one glass panel
- 44

Side table
W/D/H: 500/500/490 mm
with one glass panel
- 45

Side table
W/D/H: 350/350/390 mm
- 46

USM Haller square table low
L/D/H: 750/750/370 mm
transparent glass

Sizes refer to the axle dimensions.



Reception

47 **Reception station**
W/D/H: 4500/500/740 mm
with two extension doors,
four A6 drawers with lock,
four extension shelves each
with four Inos trays and inserts
W/D/H: 1750/500/1090 mm
with glass showcase

48.1 **Reception station**
W/D/H: 3000/350/890 mm

48.2 **Pedestal**
W/D/H: 750/500/605 mm
with one extension door and
two A6 drawers with lock

48.3 **USM Haller rectangular table**
L/D/H: 3000/750/740
pearl gray laminate
with side panels

49.1 **Reception station**
W/D/H: 3750/350/1090 mm
with additional structure
W/D/H: 750/750/740 mm
and two A6 drawers

49.2 **USM Haller rectangular table**
L/D/H: 1500/750/740 mm
pearl gray laminate

c **USM Inos CD tray**
Available in graphite black or
light gray, freestanding or
inserted on an extension shelf
or in drawers

Inserts for 23 CDs
D: 500 mm

Inserts for 14 CDs
D: 350 mm

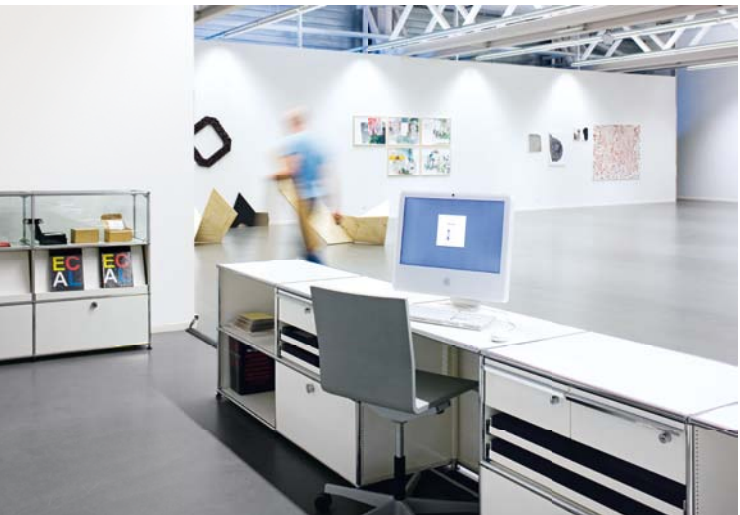
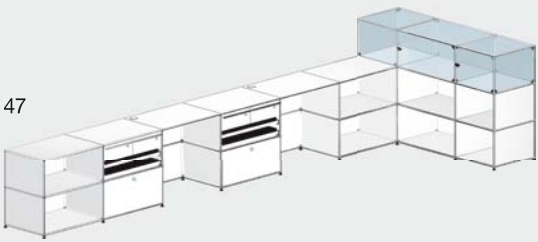
d **USM Inos DVD tray**
Available in graphite black or
light gray, freestanding or
inserted on an extension shelf
or in drawers

Inserts for 16 DVDs
D: 500 mm

Inserts for 9 DVDs
D: 350 mm

e **USM Inos organizing drawer set**
In graphite black or light gray,
with various dividers,
inserted on an extension shelf
or in drawers

Sizes refer to the axle dimensions.





Reception

50.1 Shelving
W/D/H: 4500/500/2140 mm
with six extension doors,
eighteen drop down doors
and twelve flip up doors

50.2 Shelving
W/D/H: 1500/350/1090 mm
with two extension doors
and four drop down doors

50.3 Reception station
W/D/H: 3000/350/1090 mm
with four extension doors,
four drop down doors and
four angled shelves

50.4 Pedestal
W/D/H: 395/500/605 mm
with three A6 drawers

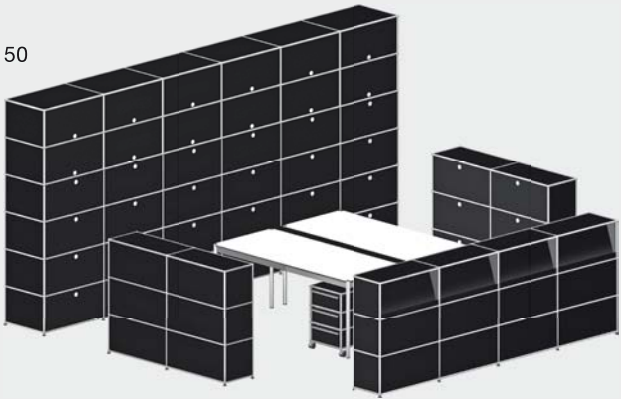
**50.5 USM Haller rectangular tables
(combination)**
L/D/H: 1750/1500+125/740 mm
pearl gray laminate
with cable ducts

51.1 Reception station
W/D/H: 3275/350/1090 mm
with two extension doors
and two drop down doors

51.2 Sideboard
W/D/H: 1750/395/740 mm
with two A4 drawers
and two A6 drawers

**51.3 USM Haller rectangular tables
(combination)**
L/D/H: 1750/1500+217/740 mm
pearl gray laminate
with two cable ducts

Sizes refer to the axle dimensions.



Reception

- 52.1

Reception station
W/D/H: 4450/350/1090 mm
W/D/H: 1100/350/1090 mm (2x)
- 52.2

Shelving
W/D/H: 1500/350/1090 mm
with two drop down doors
- 52.3

Shelving
W/D/H: 750/350/1090 mm
with one drop down door
- 52.4

USM Haller rectangular table
L/D/H: 1500/750/740
pearl gray laminate
- 53.1

Reception station
W/D/H: 4250/350/1090 mm
W/D/H: 1100/350/1090 mm
- 53.2

Pedestal
W/D/H: 395/500/605
with one small drawer,
one A6 drawer
and one A5 drawer
- 53.3

**USM Haller rectangular tables
(combination)**
L/D/H: 3500/750/740
pearl gray laminate
- 54

Reception station
W/D/H: 4500/500/1090 mm
with four extension doors,
two A6 drawers
and one divider shelf

Sizes refer to the axle dimensions.

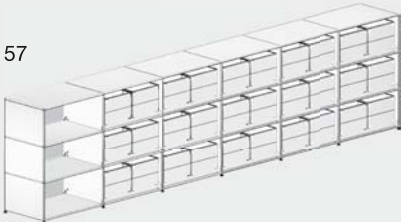
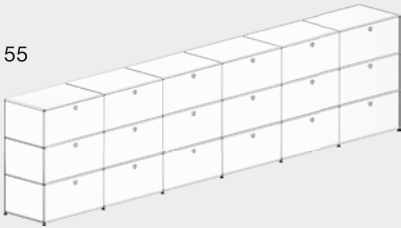




Storage

- 55 **Shelving**
W/D/H: 4500/500/1090 mm
with six extension doors
and twelve drop down doors
- 56 **Shelving**
W/D/H: 1750/500/1090 mm
with six extension doors
- 57 **Shelving**
W/D/H: 4500/500/1090 mm
with thirty open filing baskets

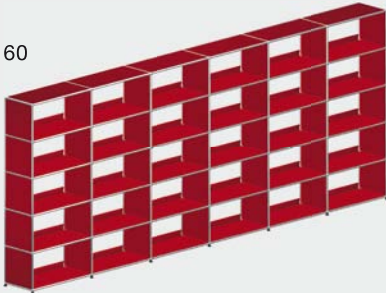
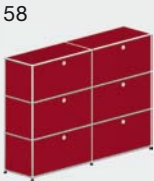
Sizes refer to the axle dimensions.



Storage

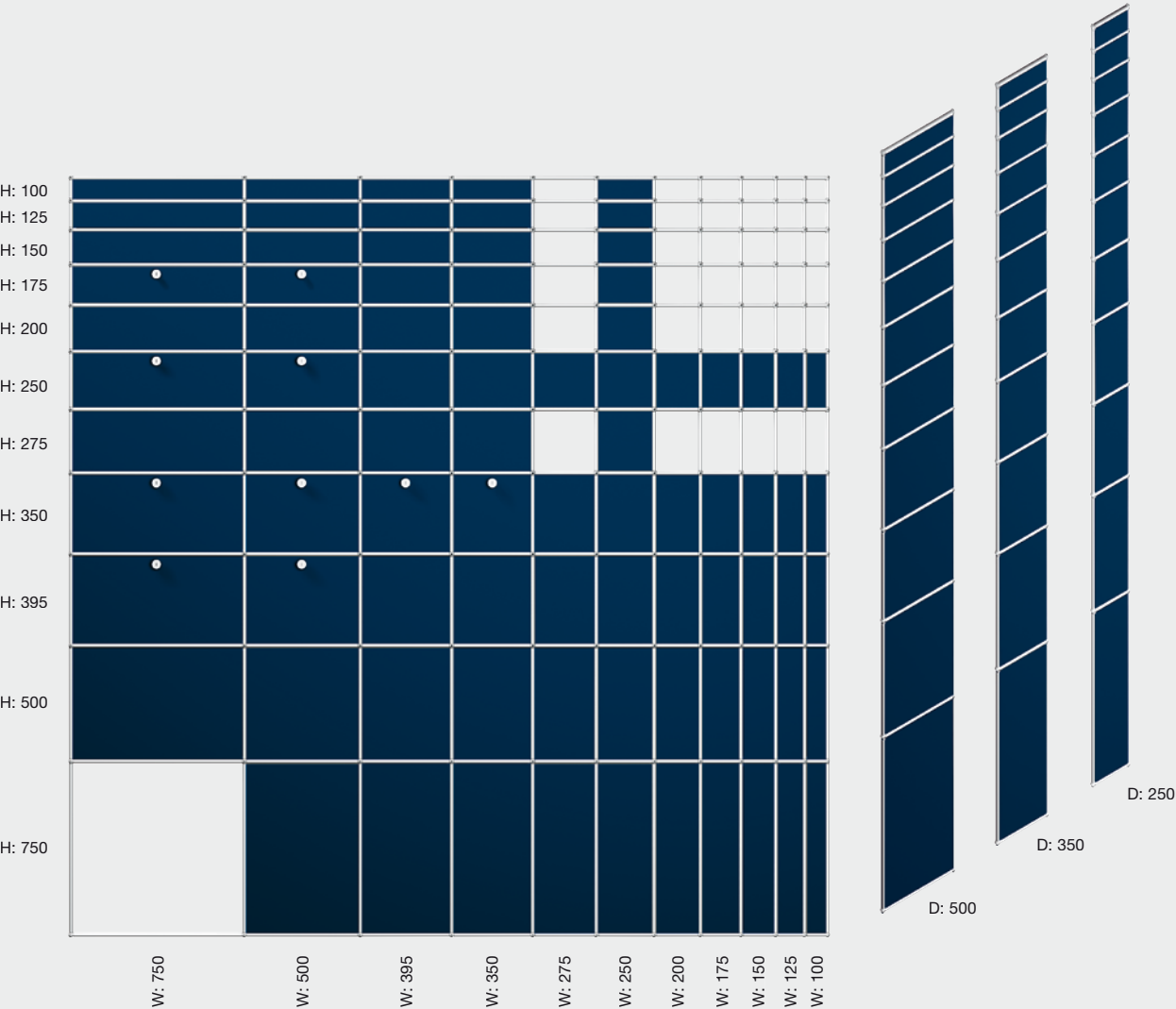
- 58 **Shelving**
W/D/H: 1500/350/1090
with six drop down doors
- 59 **Shelving**
W/D/H: 1500/700/1890 mm
with two extension shelves
- 60 **Shelving**
W/D/H: 4500/350/1790
with thirty bookshelf panels
- f **USM book-ends**
Sliding book-end to be used
with the bookshelf panel,
in graphite black or light gray

Sizes refer to the axle dimensions.



USM Haller
Measurements

The standard tube widths,
depths and heights are shown.
The standard panels are shaded,
doors and drawers are indicated.
All measurements in mm refer
to the distance between axes.



USM Haller Table / USM Kitos Table
Measurements

- 1 **USM Haller Table Rectangular**
L: 3000 / D: 1000 / H: 740 *
L: 3000 / D: 750 / H: 740 *
L: 2000 / D: 1000 / H: 740
L: 2000 / D: 750 / H: 740
L: 1750 / D: 1000 / H: 740
L: 1750 / D: 750 / H: 740
L: 1500 / D: 1000 / H: 740
L: 1500 / D: 750 / H: 740
L: 1250 / D: 750 / H: 740

* Available with adaptation points
as of August 2012

- 2 **USM Haller Table Rectangular**
Continuously height-adjustable
H: 680 to 860
L: 2000 / D: 1000
L: 2000 / D: 750
L: 1750 / D: 1000
L: 1750 / D: 750
L: 1500 / D: 1000
L: 1500 / D: 750
L: 1250 / D: 750

- 3 **USM Haller Table Advanced**
L: 2000 / D: 1000 / H: 740
L: 2000 / D: 750 / H: 740
L: 1750 / D: 1000 / H: 740
L: 1750 / D: 750 / H: 740
L: 1500 / D: 1000 / H: 740
L: 1500 / D: 750 / H: 740

- 4 **USM Haller Table Square**
L: 1000 / D: 1000 / H: 740
L: 1000 / D: 1000 / H: 370
L: 750 / D: 750 / H: 740
L: 750 / D: 750 / H: 370

- 5 **USM Kitos Table Rectangular**
L: 1800 / D: 900 / H: 740
L: 1750 / D: 750 / H: 740
L: 1500 / D: 750 / H: 740
L: 900 / D: 750 / H: 740

Continuously height-adjustable
H: 700 to 1200
L: 1800 / D: 900
L: 1750 / D: 750
L: 1500 / D: 750
L: 900 / D: 750

- 6 **USM Kitos Table E Rectangular**
Continuously height-adjustable
H: 650 to 1300
L: 1800 / D: 900
L: 1750 / D: 750
L: 1600 / D: 800

- 7 **USM Kitos Table Square**
L: 900 / D: 900 / H: 740
L: 750 / D: 750 / H: 740
L: 750 / D: 750 / H: 450

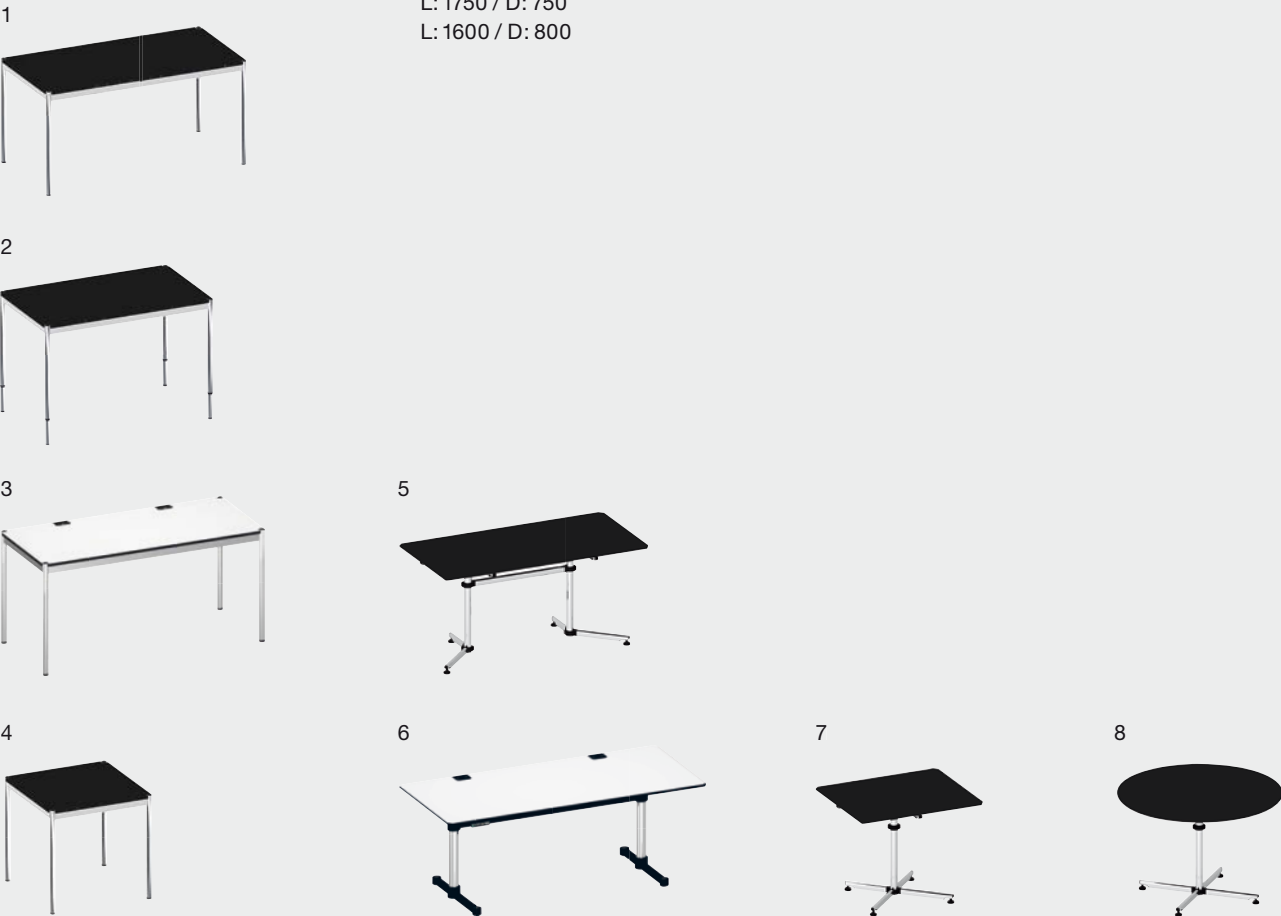
Continuously height-adjustable
H: 680 to 1090
L: 750 / D: 750

- 8 **USM Kitos Table Round**
Ø 1100 / H: 740
Ø 900 / H: 740
Ø 900 / H: 450

Continuously height-adjustable
H: 680 to 1090
Ø 900

All measurements in mm

More information can be found
in the “Products” section at
www.usm.com



USM Haller / USM Kitos
Accessories

Functional accessories perfectly complement USM Haller and USM Kitos, and in some cases they can also be used independently in combination with the other USM product lines. The accessories meet the demands of time, always ensuring simplicity of form and maximum functionality in a perfect finish.

More information can be found in the “Products” section at www.usm.com.



- 1 **Book-ends**
- 2a **5 drawer box set C4**
- 2b **10 drawer box set C4**
- 3a **DVD tray**
- 3b **CD tray**
- 4a **Angled file trays**
- 4b **Organizing drawer set**
- 5 **Hanging file baskets**

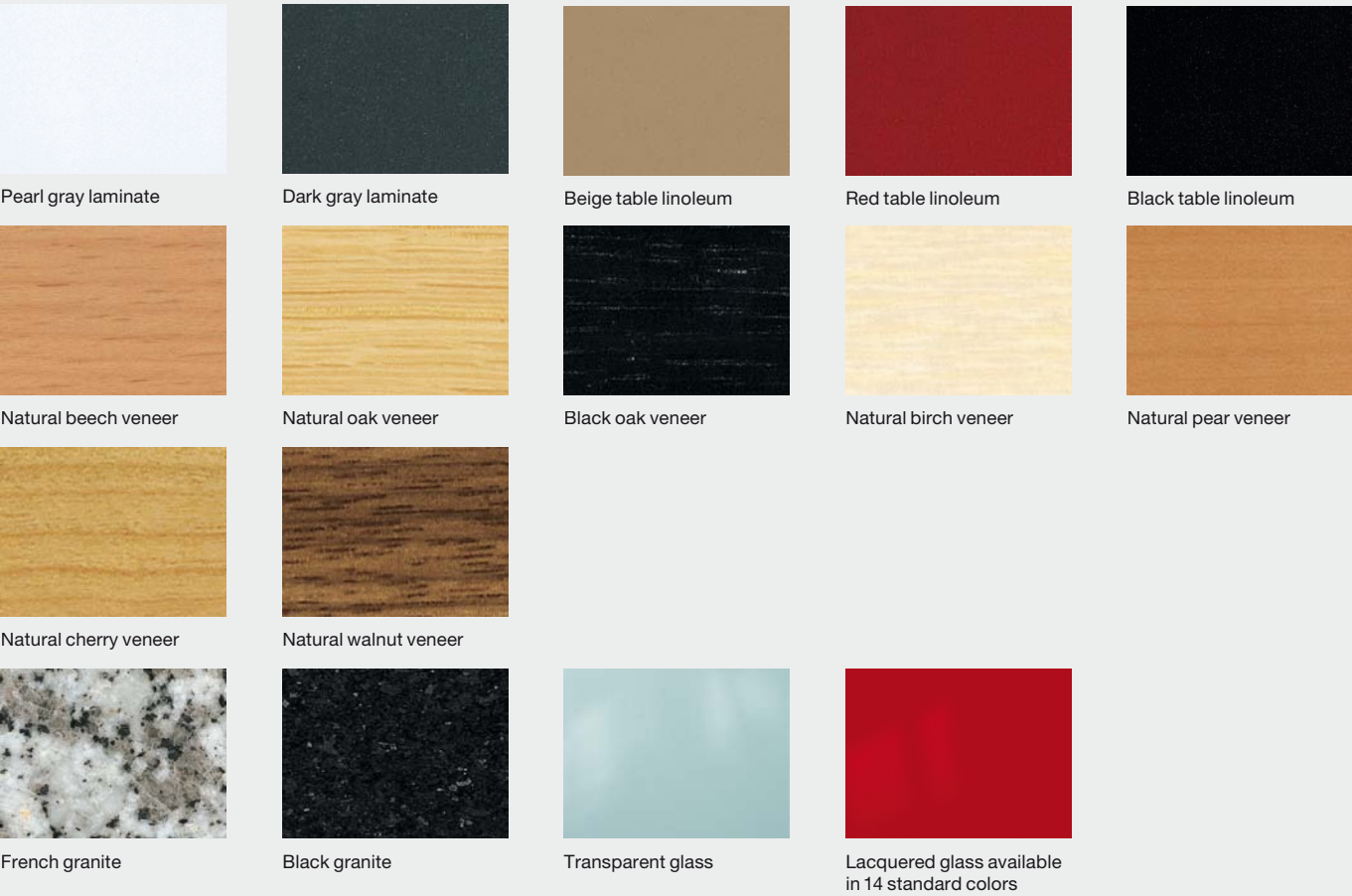


- 6 **Lamp peg**
- 7 **Flat screen support bar**
- 8 **Flat screen support**
- 9 **Link chain**
- 10 **CPU holder**
- 11 **Pivoting pen holder**

USM Haller
Colors



USM Haller / USM Kitos
Table surfaces



* USM Inos accessories are available in graphite black and light gray

Switzerland:
USM U. Schärer Söhne AG
Thunstrasse 55
CH-3110 Münsingen
Phone +41 31 720 72 72
Fax +41 31 720 73 40
info@ch.usm.com

Germany:
USM U. Schärer Söhne GmbH
Postfach 1653
D-77806 Bühl
Phone +49 72 23 80 94 0
Fax +49 72 23 80 94 199
info@de.usm.com

France:
USM U. Schärer Fils SA
Bureaux et showroom Paris
23, rue de Bourgogne
F-75007 Paris
Phone +33 1 53 59 30 30
Fax +33 1 53 59 30 39
info@fr.usm.com

USA:
USM U. Schaerer Sons Inc.
New York Showroom
28 – 30 Greene Street
New York, NY 10013
Phone +1 212 371 1230
Fax +1 212 371 1251
info@us.usm.com

Japan:
USM U. Schaerer Sons K.K.
Tokyo Showroom
Marunouchi MY PLAZA 1 · 2F
2-1-1 Marunouchi, Chiyoda-ku
Tokyo 100-0005
Phone +81 3 5220 2221
Fax +81 3 5220 2277
info@jp.usm.com

All other countries
contact USM Switzerland.

www.usm.com